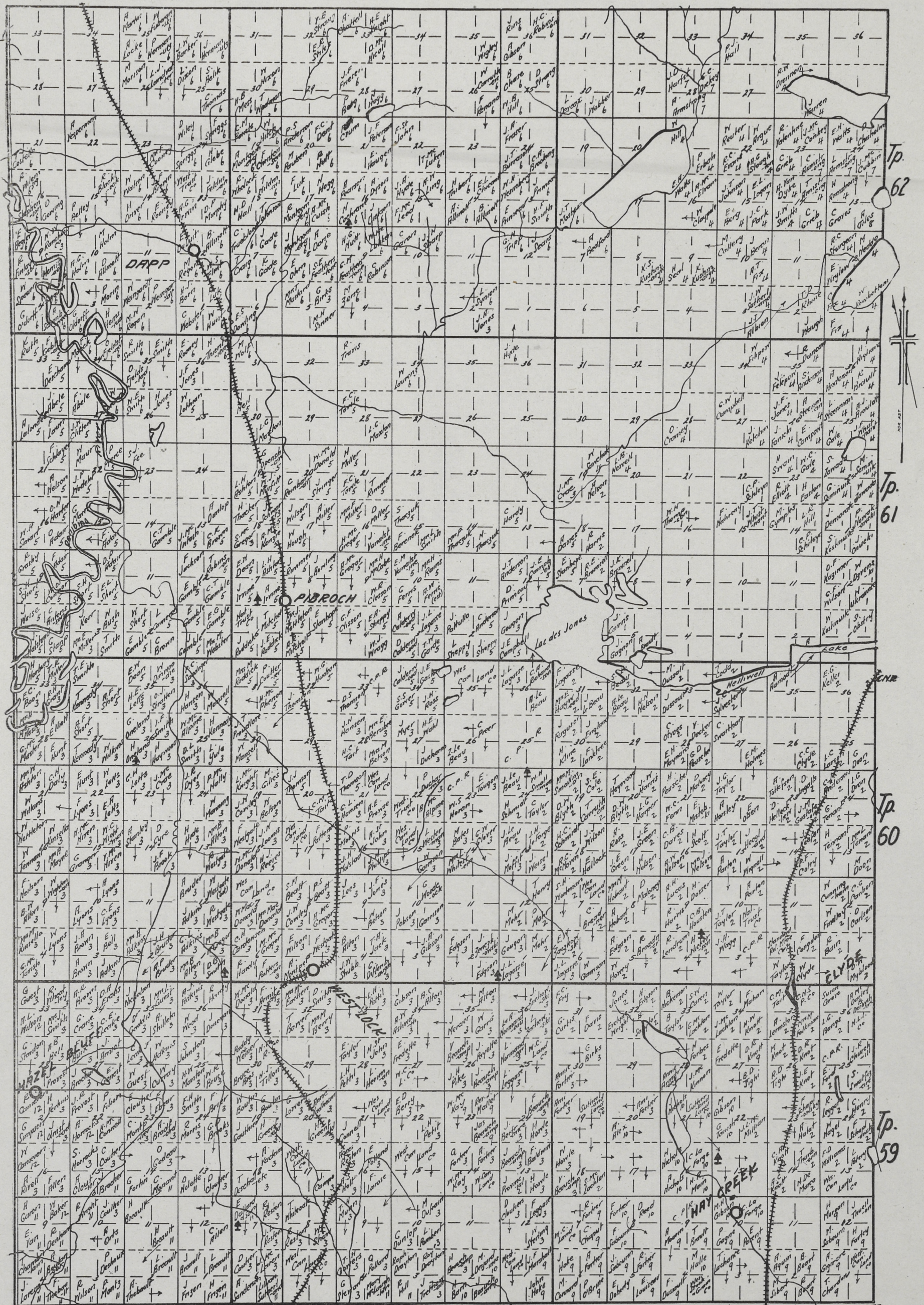


M. S. ARNIEL, Manager

Price 1.00

We have these Maps for any part of Manitoba, Saskatchewan or Alberta. Also Mailing Lists of all kinds. Write us for Map Making, Mounting, Draughting, Etc.

The small figures under the name indicate the number of the Post Office.



1. NESTON
2. CLYDE
3. WESTLOCK
4. TANTANINAW
5. PIBROCH
6. DAPP
7. RICHESIEK
8. S. LOUGH VALLEY
9. VIMY
10. HAY CREEK
11. PICKARDVILLE
12. HAZEL BLUFF
R. 27 W. of 4th M. R. 26 R. 25 Cummins Map No 184